



Tsa Kwa Luten  
oceanfront resort

# CONFERENCE AND MEETING PLANNER

TOLL FREE: 1-800-665-7745

TELEPHONE: 250-830-2299

FAX: 250-285-2532

EMAIL: [helenchickite@capemudgeresort.bc.ca](mailto:helenchickite@capemudgeresort.bc.ca)

Please visit our website for images of our property

WEBSITE: [www.capemudgeresort.bc.ca](http://www.capemudgeresort.bc.ca)

# *Tsa Kwa Luten Lodge*

*The Oceanfront Resort at Cape Mudge*

## Accommodation

Total bedrooms = 44

Total beds = 75

### Main Lodge Accommodation:

30 rooms with 4 room types

- \*8 lofts with 3 double beds each
- \* 8 doubles with 2 double beds each
- \*6 rooms with 1 king bed each
- \*7 rooms with 1 queen bed each
- 1 complimentary hospitality suite  
with queen sized sofa bed, CD player, wet bar,  
small fridge (if available for dates that conference  
is booked)

### Cottage Accommodation

6 Beachfront cottages

- \* 3 x 2 bedroom Beachfront with kitchenette
- \* 1 x 4 bedroom Guesthouse with full kitchen
- \* 1 x 3 bedroom Lighthouse with full kitchen
- \* 1 x 2 bedroom Wharfhouse with full kitchen \*

- \* All main lodge rooms have one (1) private bathroom
- \* All rooms have a balcony or patio
- \* All rooms & cottages have deluxe ocean views
- \* All main level rooms are handicap accessible; however some rooms are better suited to individuals with special needs

Tsa Kwa Luten Lodge is able to design a package to include cultural, fishing, ecotourism or relaxation requirements. We look forward to serving you with the warmth and hospitality for which the Laichwiltach people have long been known. Should you have additional questions or would like to book space for your net conference, meeting, seminar, workshop or retreat, please feel free to contact us on our toll free line at 1-800-665-7745 or at 250-830-2299 or you may email to [helenchickite@capemudgeresort.bc.ca](mailto:helenchickite@capemudgeresort.bc.ca).

# Tsa Kwa Lutén Lodge

The Oceanfront Resort at Cape Mudge

## Package Cost

### Deluxe Conference Package Prices

Spring, Fall, Winter Season October 1 – May 31		Summer Season June 1 – September 30	
Main Lodge		Main Lodge	
Single Occupancy	\$211.80	Single Occupancy	\$241.80
Double Occupancy	\$166.80	Double Occupancy	\$179.80
Triple Occupancy	\$152.80	Triple Occupancy	\$161.80

- Rates are quoted per person, per night
- October dates subject to change depending on closing date
- Includes accommodation
- Includes breakfast, lunch, dinner and desserts – Buffet style
- Includes morning nutrition break with coffee & tea
- Includes afternoon nutrition break with coffee & tea
- Includes conference and meeting room rental with use of audio/visual equipment
- Does not include applicable taxes and some restrictions apply
- Free WiFi in the main area of lodge, rooms and cottages

### Economy Conference Package Prices

Fall & Winter Season Dates Vary	
Main Lodge	
Single Occupancy	\$179.19
Double Occupancy	\$138.19
Triple Occupancy	\$127.19

- Rates are quoted per person, per night
- Includes accommodation
- Includes breakfast, lunch, dinner - no desserts
- Includes morning and afternoon coffee & tea service
- Includes conference and meeting room rental with use of audio/visual equipment
- Does not include applicable taxes and some restrictions apply
- Free WiFi

# Tsa Kwa Lutén Lodge

*The Oceanfront Resort at Cape Mudge*

## Food & Beverage Facilities

\* The dining room will seat up to 70 persons in a deluxe ocean view setting and comfortably service all buffet and banquet requirements

\* Lounge facilities are also provided with oversized chairs where guests can relax after a busy day and enjoy the outstanding views

\* For groups of 25 or more, meals will be served Buffet Style. For groups of less than 25, meals will be served by plate service

Freshly brewed coffee & teas	\$3.95 each
Bottled water, soft drinks, fruit juices (charged on consumption)	\$3.00 each
Selection of muffins/croissants/squares/cookies	\$3.50 pp
Fresh fruit - whole	\$2.50 pp
Fresh fruit salad	\$6.00 pp
Individual yogurts and granola bars	\$4.00 pp

Beverage & nutrition prices do not include taxes or 20% gratuity

## Beverage/Nutrition

**An ice water station will be provided and replenished with all meetings and conferences at no charge**

## Conference & Meeting Facilities

Board Room	365sq.ft	20 seat boardroom style can be used as a break out room	Full Day \$100.00	Half Day \$55.00
Conference Room	1225 sq.ft	60 seat classroom style 40 seat closed square 30 seat u-shape	\$200.00	\$120.00
Grand Hall	2500 sq.ft	100 seat combination style (round & rectangle)	\$500.00	\$300.00

Above room rentals do not include applicable taxes

The half day rate is available for bookings of 4 hours or less. A signboard outside each meeting room is available on request. The Grand Hall is available for use as a meeting space for larger groups booking the entire Main Lodge. A variety of supplies, equipment and services are available for use by all conference guests to be used in the conference and board room:

- \* Overhead projector and screen
- \* Flip charts and pens
- \* White board with dry erase pens
- \*Microphone and sound system

## Deluxe Conference Group Booking Menu

(applicable to groups in excess of 25)

### Breakfast

<p><b>Option 1 Warm Continental Buffet</b>                  Selection of fresh seasonal sliced fruit                  Toast with condiments                  Yoghurt with berry compote &amp; granola                  Boiled eggs                  Juices, coffee &amp; assortment of teas</p>	<p><b>Option 2 Hot Buffet</b>                  Selection of fresh seasonal sliced fruit                  Toast with condiments                  Scrambled eggs &amp; bacon                  Hash browns                  Juices, coffee &amp; assortment of teas</p>
---	--

### Lunch

<p><b>Option 1 Fish &amp; Chips (plated)</b>                  Two pieces of golden fried Pacific Ling Cod                  French Fries                  House made coleslaw &amp; tartar sauce                  Coffee &amp; assortment of teas</p>	<p><b>Option 2 Chili &amp; Salad Buffet</b>                  Garden salad or Caesar salad                  House made chili                  Garlic toast                  Coffee &amp; assortment of teas</p>
<p><b>Option 3 Soup &amp; Sandwich Buffet</b>                  Soup of the moment                  Variety of sandwiches &amp;/or pinwheel wraps                  Coffee &amp; assortment of teas</p>	<p><b>Option 4 Falafel Wraps</b>                  Tsaziki, fresh vegetables, 3 in house made falafels                  Garden salad or Caesar salad                  Coffee &amp; assortment of teas</p>
<p><b>Option 5 Chicken Satay Buffet</b>                  Succulent chicken satay                  Garden salad or Caesar salad                  Fresh baked bread                  Coffee &amp; assortment of teas</p>	<p><i>Our Chef is always happy to work with you on finding the perfect menu options.</i></p>

### Dinner

<p><b>Option 1 Ham or Pork Tenderloin Buffet</b>                  Chef's choice salad                  Fresh baked bread                  Your choice of Baked Ham or Pork Tenderloin                  Scalloped potatoes                  Fresh seasonal vegetables                  Chef's choice dessert                  Coffee &amp; assortment of teas</p>	<p><b>Option 2 Prime Rib Buffet</b>                  Chef's choice salad                  Fresh baked bread                  Prime Rib, au jus with horseradish                  Yorkshire pudding                  Chef's choice potatoes                  Fresh seasonal vegetables                  Chef's choice dessert                  Coffee &amp; assortment of teas</p>
<p><b>Option 3 Chicken Buffet</b>                  Chef's choice salad                  Fresh baked bread                  Oven roasted chicken                  Rice pilaf                  Fresh seasonal vegetables                  Chef's choice dessert                  Coffee &amp; assortment of teas</p>	<p><b>Option 4 Salmon Buffet</b>                  Chef's choice salad                  Fresh baked bread                  Grilled Salmon                  Rice pilaf                  Fresh seasonal vegetables                  Chef's choice dessert                  Coffee &amp; assortment of teas</p>

*Plate service, rather than buffet, will serve groups of less than 25 – vegetarian options available by request, in advance (minimum 7 days notice)*

## Economy Conference Group Booking Menu

(applicable to groups in excess of 25)

### Breakfast

<p><b>Option 1 Hot Buffet</b>                  Scrambled eggs                  Bacon                  Hash browns                  Toast with condiments                  Juices, coffee &amp; assortment of teas</p>	<p><b>Option 2 Continental Buffet</b>                  Selection of fresh seasonal sliced fruit                  Toast with condiments                  Yogurt with berry compote &amp; granola                  Boiled eggs                  Juices, coffee &amp; assortment of teas</p>
---	---

### Lunch

<p><b>Option 1 Soup &amp; Sandwich Buffet</b>                  Soup of the moment                  Variety of sandwiches &amp;/or pinwheel wraps                  Coffee &amp; assortment of teas</p>	<p><b>Option 2 Chili &amp; Salad Buffet</b>                  Garden salad or Caesar salad                  House made chili                  Garlic toast                  Coffee &amp; assortment of teas</p>
<p><b>Option 3 Chicken Satay Buffet</b>                  Succulent chicken satay                  Garden salad or Caesar salad                  Fresh baked bread                  Coffee &amp; assortment of teas</p>	<p><b>Option 4 Falafel Wraps</b>                  Tsaziki, fresh vegetables, 3 in house made falafels                  Garden salad or Caesar salad                  Coffee &amp; assortment of teas</p>

### Dinner

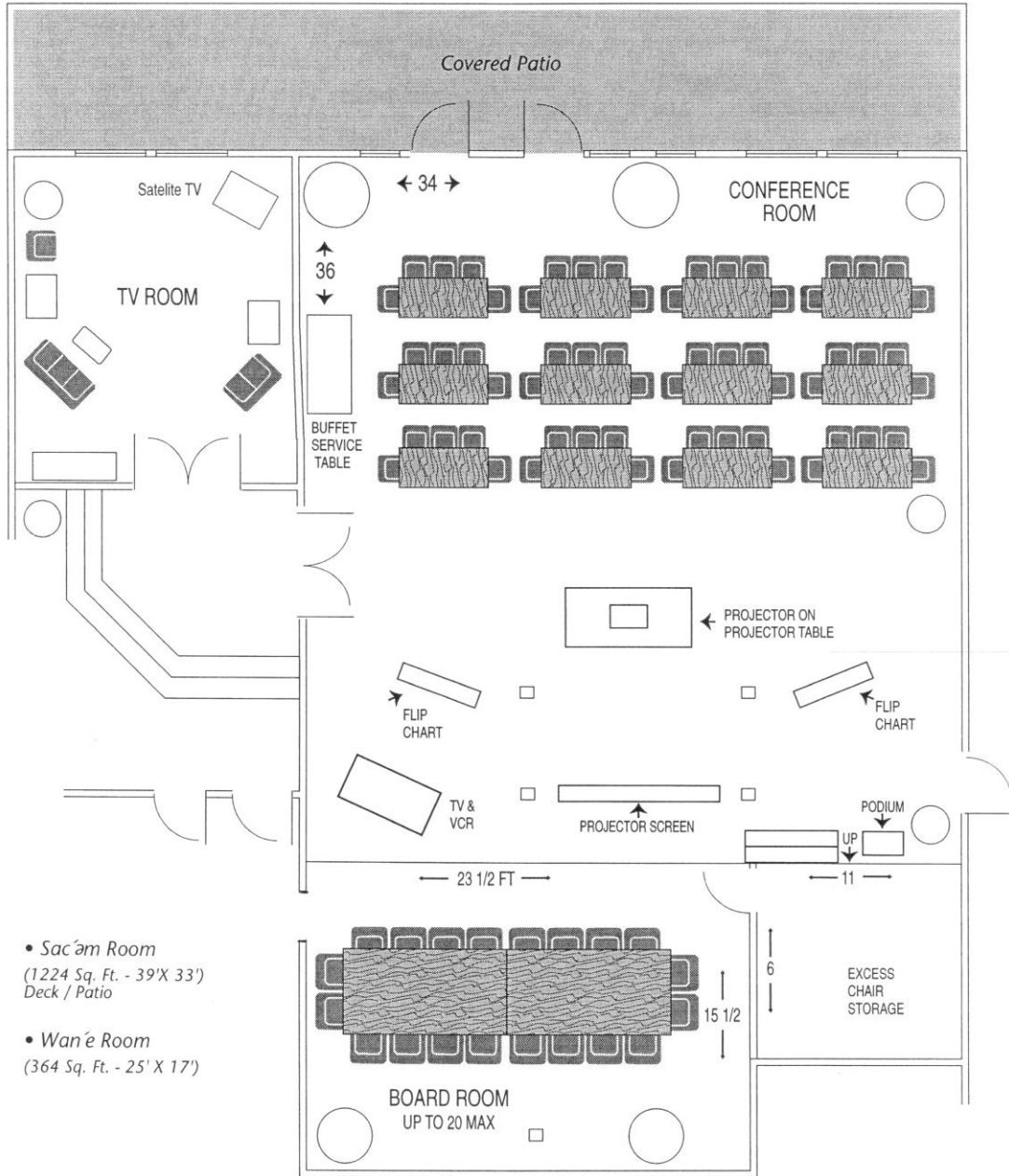
<p><b>Option 1 Roast Beef Buffet</b>                  Chef's choice salad                  Fresh baked bread                  Roast Beef &amp; Yorkshire pudding                  Chef's choice potatoes                  Seasonal vegetables                  Coffee &amp; assortment of teas</p>	<p><b>Option 2 Salmon Buffet</b>                  Chef's choice salad                  Fresh baked bread                  Grilled Salmon (1 x 3oz piece per person)                  Rice pilaf                  Fresh seasonal vegetables                  Coffee &amp; assortment of teas</p>
<p><b>Option 3 Chicken Buffet</b>                  Chef's choice salad                  Fresh baked bread                  Oven roasted chicken (1 x 5oz piece per person)                  Rice pilaf                  Fresh seasonal vegetables                  Coffee &amp; assortment of teas</p>	<p><b>Option 4 Ham or Pork Tenderloin Buffet</b>                  Chef's choice salad                  Fresh baked bread                  Your choice of Baked Ham or Pork Tenderloin                  Scalloped potatoes                  Fresh seasonal vegetables                  Coffee &amp; assortment of teas</p>

*Plate service, rather than buffet, will serve groups of less than 25 – vegetarian options available by request, in advance (minimum 7 days notice)*

# Tsa Kwa Luten Lodge

## MEETING ROOMS

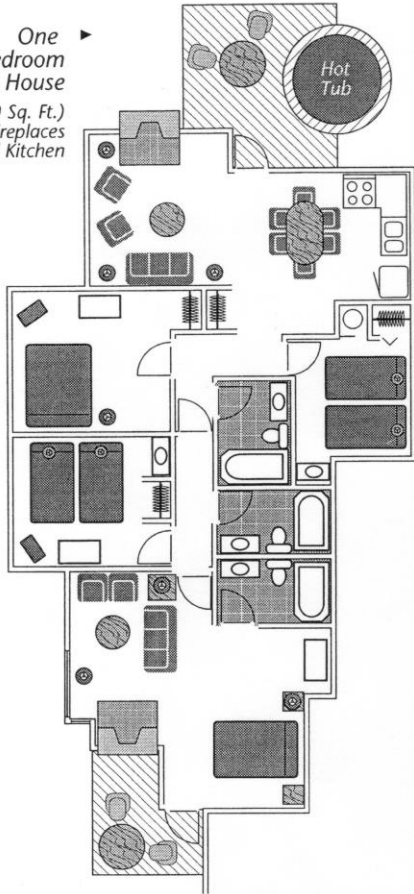
... Meeting and conference facilities to 80 people



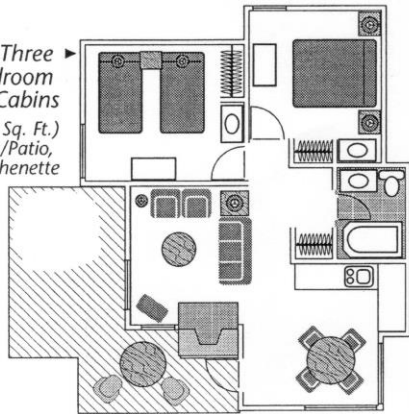
# ACCOMMODATIONS

... All areas offer spectacular ocean views.

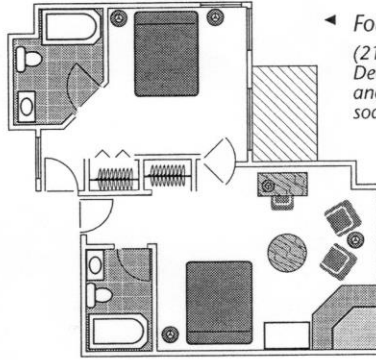
▶ **One 4-Bedroom Guest House**  
(1120 Sq. Ft.)  
Deck/Patio, 2 Fireplaces & Full Kitchen



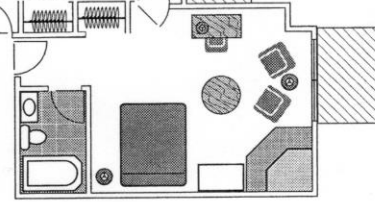
▶ **Three 2-Bedroom Cabins**  
(616 Sq. Ft.)  
Deck/Patio, Fireplace & Kitchenette



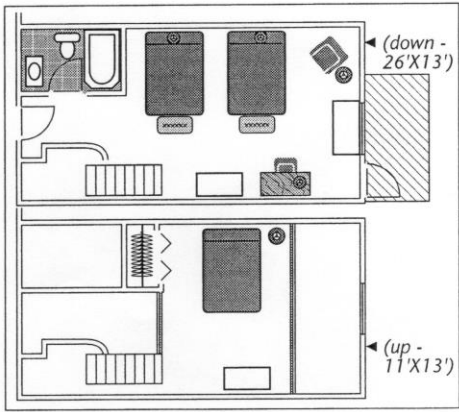
◀ **Four Suite Bedroom**  
(212 Sq. Ft.)  
Deck/Patio and Jacuzzi soaker tub



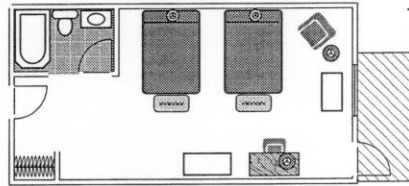
◀ **Four Suite Living Room**  
(238 Sq. Ft.)  
Gas Fireplaces Two with Deck/Patio



◀ **Eight Loft Rooms**  
(481 Sq. Ft.)  
Deck



◀ **Eight Double/Double Rooms**  
(26'X13'  
338 Sq. Ft.)



◀ **Six King Rooms**  
(21'X15'  
336 Sq. Ft.)

