



Tsa Kwa Luten
oceanfront resort

CONFERENCE AND MEETING PLANNER

TOLL FREE: 1-800-665-7745

TELEPHONE: 250-830-2299

FAX: 250-285-2532

EMAIL: helenchickite@capemudgeresort.bc.ca

Please visit our website for images of our property

WEBSITE: www.capemudgeresort.bc.ca

Tsa Kwa Luten Lodge

The Oceanfront Resort at Cape Mudge

Accommodation

Total bedrooms = 44

Total beds = 75

Main Lodge Accommodation:

30 rooms with 4 room types

- *8 lofts with 3 double beds each
- * 8 doubles with 2 double beds each
- *6 rooms with 1 king bed each
- *7 rooms with 1 queen bed each
- 1 complimentary hospitality suite
with queen sized sofa bed, CD player, wet bar,
small fridge (if available for dates that conference
is booked)

Cottage Accommodation

6 Beachfront cottages

- * 3 x 2 bedroom Beachfront with kitchenette
- * 1 x 4 bedroom Guesthouse with full kitchen
- * 1 x 3 bedroom Lighthouse with full kitchen
- * 1 x 2 bedroom Wharfhouse with full kitchen *

- * All main lodge rooms have one (1) private bathroom
- * All rooms have a balcony or patio
- * All rooms & cottages have deluxe ocean views
- * All main level rooms are handicap accessible; however some rooms are better suited to individuals with special needs

Tsa Kwa Luten Lodge is able to design a package to include cultural, fishing, ecotourism or relaxation requirements. We look forward to serving you with the warmth and hospitality for which the Laichwiltach people have long been known. Should you have additional questions or would like to book space for your net conference, meeting, seminar, workshop or retreat, please feel free to contact us on our toll free line at 1-800-665-7745 or at 250-830-2299 or your may email to helenchickite@capemudgeresort.bc.ca.

Tsa Kwa Lutén Lodge

The Oceanfront Resort at Cape Mudge

Package Cost

Deluxe Conference Package Prices

Spring, Fall, Winter Season October 1 – May 31		Summer Season June 1 – September 30	
Main Lodge		Main Lodge	
Single Occupancy	\$197.70	Single Occupancy	\$227.70
Double Occupancy	\$152.70	Double Occupancy	\$165.70
Triple Occupancy	\$138.70	Triple Occupancy	\$147.70

- Rates are quoted per person, per night
- October dates subject to change depending on closing date
- Includes accommodation
- Includes breakfast, lunch, dinner and desserts – Buffet style
- Includes morning nutrition break with coffee & tea
- Includes afternoon nutrition break with coffee & tea
- Includes conference and meeting room rental with use of audio/visual equipment
- Does not include applicable taxes and some restrictions apply
- Free WiFi in the main area of lodge, rooms and cottages

Economy Conference Package Prices

Fall & Winter Season Dates Vary	
Main Lodge	
Single Occupancy	\$169.99
Double Occupancy	\$128.99
Triple Occupancy	\$117.99

- Rates are quoted per person, per night
- Includes accommodation
- Includes breakfast, lunch, dinner - no desserts
- Includes morning and afternoon coffee & tea service
- Includes conference and meeting room rental with use of audio/visual equipment
- Does not include applicable taxes and some restrictions apply
- Free WiFi

Tsa Kwa Lutem Lodge

The Oceanfront Resort at Cape Mudge

Food & Beverage Facilities

* The dining room will seat up to 70 persons in a deluxe ocean view setting and comfortably service all buffet and banquet requirements

* Lounge facilities are also provided with oversized chairs where guests can relax after a busy day and enjoy the outstanding views

* For groups of 25 or more, meals will be served Buffet Style. For groups of less than 25, meals will be served by plate service

Freshly brewed coffee & teas	\$3.95 each
Bottled water, soft drinks, fruit juices (charged on consumption)	\$3.00 each
Selection of muffins/croissants/squares/cookies	\$3.25 pp
Fresh fruit - whole	\$2.50 pp
Fresh fruit salad	\$6.00 pp
Individual yogurts and granola bars	\$3.00 pp

Beverage & nutrition prices do not include taxes or 20% gratuity

Beverage/Nutrition

An ice water station will be provided and replenished with all meetings and conferences at no charge

Conference & Meeting Facilities

Board Room	365sq.ft	20 seat boardroom style can be used as a break out room	Full Day \$100.00	Half Day \$55.00
Conference Room	1225 sq.ft	60 seat classroom style 40 seat closed square 30 seat u-shape	\$200.00	\$120.00
Grand Hall	2500 sq.ft	100 seat combination style (round & rectangle)	\$500.00	\$300.00

Above room rentals do not include applicable taxes

The half day rate is available for bookings of 4 hours or less. A signboard outside each meeting room is available on request. The Grand Hall is available for use as a meeting space for larger groups booking the entire Main Lodge. A variety of supplies, equipment and services are available for use by all conference guests to be used in the conference and board room:

- * Overhead projector and screen
- * Flip charts and pens
- * White board with dry erase pens
- *Microphone and sound system

Deluxe Conference Group Booking Menu

(applicable to groups in excess of 25)

Breakfast

<p>Option 1 Warm Continental Buffet Selection of fresh seasonal sliced fruit Toast with condiments & croissants Yoghurt with berry sauce & granola Hot oatmeal with brown sugar Boiled eggs Juices, coffee & assortment of teas</p>	<p>Option 2 Hot Buffet Selection of fresh seasonal sliced fruit Toast with condiments & croissants Scrambled eggs & bacon or Eggs Benedict Hash browns Juices, coffee & assortment of teas</p>
--	--

Lunch

<p>Option 1 Fish & Chips (plated) Two pieces of golden fried Pacific Ling Cod French Fries House made coleslaw & tartar sauce Coffee & assortment of teas</p>	<p>Option 2 Chili & Salad Buffet Garden salad or Caesar salad House made chili Garlic toast Coffee & assortment of teas</p>
<p>Option 3 Soup & Sandwich Buffet Soup of the moment Variety of sandwiches &/or pinwheel wraps Coffee & assortment of teas</p>	<p>Option 4 Falafel Wraps Tsaziki, fresh vegetables, 3 in house made falafels Garden salad or Caesar salad Coffee & assortment of teas</p>
<p>Option 5 Chicken Satay Buffet Succulent chicken satay Garden salad or Caesar salad Fresh baked bread Coffee & assortment of teas</p>	<p><i>Our Chef is always happy to work with you on finding the perfect menu options.</i></p>

Dinner

<p>Option 1 Ham or Pork Tenderloin Buffet Chef's choice salad Fresh baked bread Your choice of Baked Ham or Pork Tenderloin Scalloped potatoes Fresh seasonal vegetables Chef's choice dessert Coffee & assortment of teas</p>	<p>Option 2 Prime Rib Buffet Chef's choice salad Fresh baked bread Prime Rib, au jus with horseradish Yorkshire pudding Chef's choice potatoes Fresh seasonal vegetables Chef's choice dessert Coffee & assortment of teas</p>
<p>Option 3 Chicken Buffet Chef's choice salad Fresh baked bread Oven roasted chicken Rice pilaf Fresh seasonal vegetables Chef's choice dessert Coffee & assortment of teas</p>	<p>Option 4 Salmon Buffet Chef's choice salad Fresh baked bread Grilled Salmon Rice pilaf Fresh seasonal vegetables Chef's choice dessert Coffee & assortment of teas</p>

Plate service, rather than buffet, will serve groups of less than 25 – vegetarian options available by request, in advance (minimum 7 days notice)

Economy Conference Group Booking Menu

(applicable to groups in excess of 25)

Breakfast

<p>Option 1 Hot Buffet Scrambled eggs Bacon Hash browns Toast with condiments Coffee & assortment of teas</p>	<p>Option 2 Continental Buffet Selection of fresh seasonal sliced fruit Toast with condiments Yogurt with berry sauce & granola Assorted cold cereal Boiled eggs Juices, coffee & assortment of teas</p>
---	---

Lunch

<p>Option 1 Soup & Sandwich Buffet Soup of the moment Variety of sandwiches &/or pinwheel wraps Coffee & assortment of teas</p>	<p>Option 2 Chili & Salad Buffet Garden salad or Caesar salad House made chili Garlic toast Coffee & assortment of teas</p>
<p>Option 3 Chicken Satay Buffet Succulent chicken satay Garden salad or Caesar salad Fresh baked bread Coffee & assortment of teas</p>	<p>Option 4 Falafel Wraps Tzaziki, fresh vegetables, 3 in house made falafels Garden salad or Caesar salad Coffee & assortment of teas</p>

Dinner

<p>Option 1 Roast Beef Buffet Chef's choice salad Fresh baked bread Roast Beef & Yorkshire pudding Chef's choice potatoes Seasonal vegetables Coffee & assortment of teas</p>	<p>Option 2 Salmon Buffet Chef's choice salad Fresh baked bread Grilled Salmon (1 x 3oz piece per person) Rice pilaf Fresh seasonal vegetables Coffee & assortment of teas</p>
<p>Option 3 Chicken Buffet Chef's choice salad Fresh baked bread Oven roasted chicken (1 x 5oz piece per person) Rice pilaf Fresh seasonal vegetables Coffee & assortment of teas</p>	<p>Option 4 Ham or Pork Tenderloin Buffet Chef's choice salad Fresh baked bread Your choice of Baked Ham or Pork Tenderloin Scalloped potatoes Fresh seasonal vegetables Coffee & assortment of teas</p>

Plate service, rather than buffet, will serve groups of less than 25 – vegetarian options available by request, in advance (minimum 7 days notice)

Tsa Kwa Luten Lodge

The Oceanfront Resort at Cape Mudge

Food & Beverage Facilities

The dining room will seat up to 70 persons in a deluxe ocean view setting and comfortably service all buffet and banquet requirements

For groups of 25 or more, meal will be served Buffet style. For groups of less than 25, meals will be plated service. Meal options available on request.

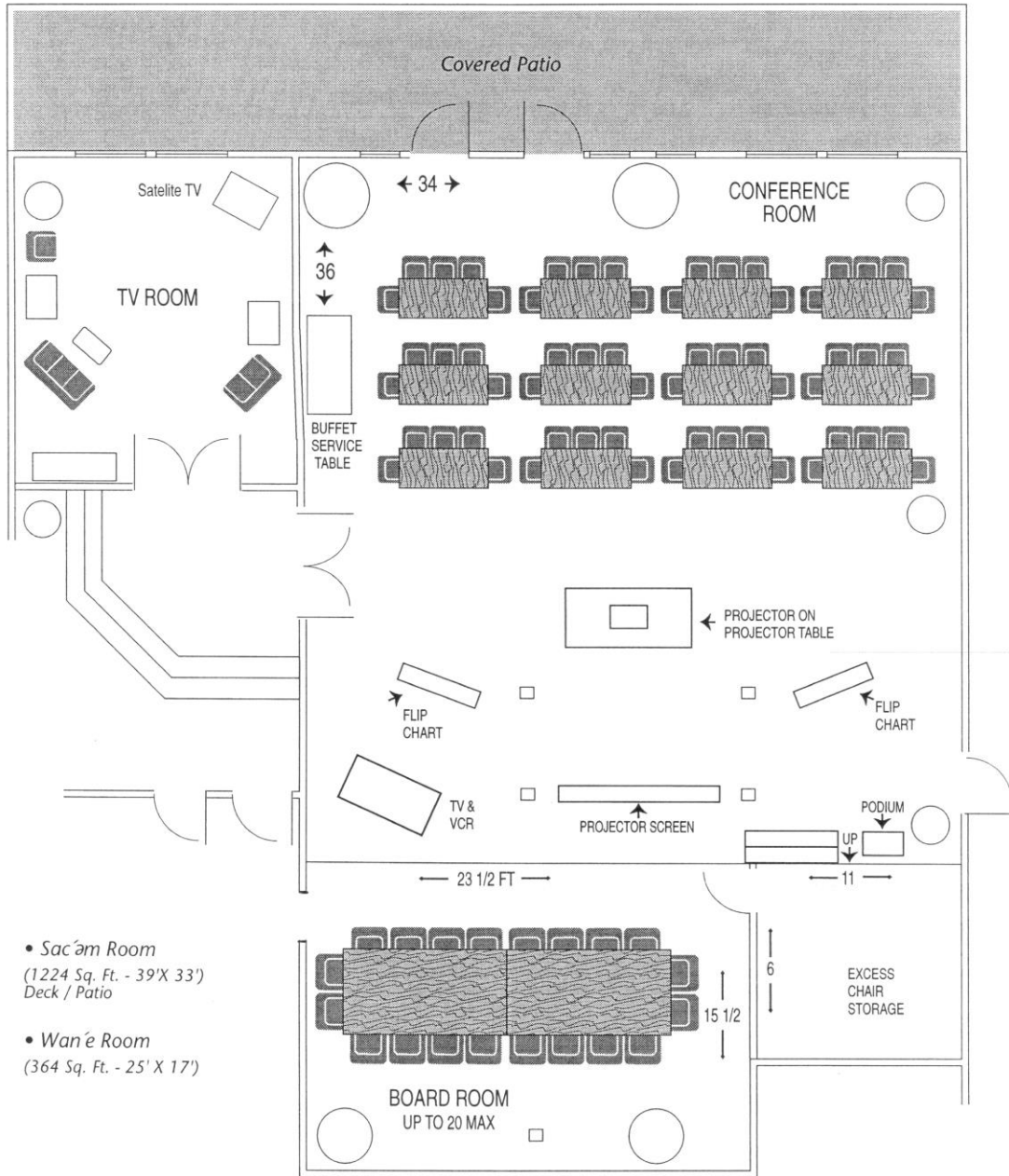
Freshly brewed coffee & tea	\$3.95 each
Bottled water, soft drinks, fruit juices (charged on consumption)	\$3.00 each
Selection of muffins, croissants, squares, cookies	\$3.25 per person
Fresh fruit - whole	\$2.50 per person
Fresh fruit salad	\$6.00 per person
Individual yoghurts and granola bars	\$3.00 per person

Should your group require accommodations but not our full Conference Package, please refer to our Rates Sheet

We look forward to hosting you with the warmth and hospitality for which the Laichwiltach people have long been known. Should you have additional questions or would like to book space for your next conference, meeting, seminar, workshop or retreat, please feel free to contact us on our toll free line at 1+800-665-7445 or at 250-830-2299 or email us at helenchickite@capemudgeresort.bc.ca

MEETING ROOMS

... Meeting and conference facilities to 80 people



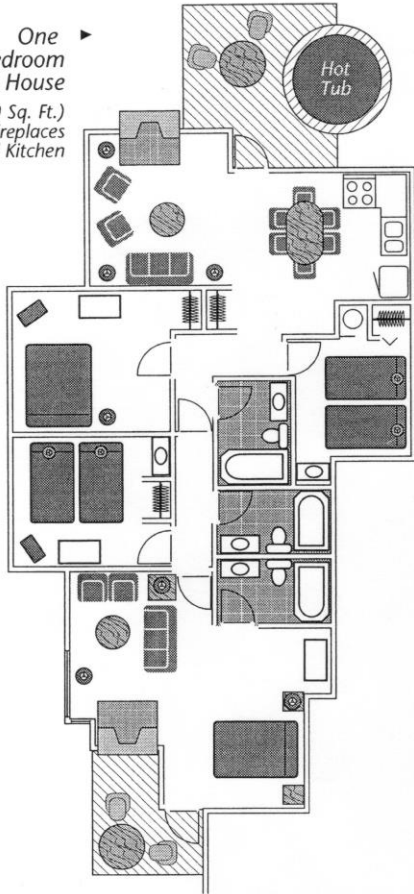
- *Sac'ám Room*
(1224 Sq. Ft. - 39' X 33')
Deck / Patio

- *Wan'é Room*
(364 Sq. Ft. - 25' X 17')

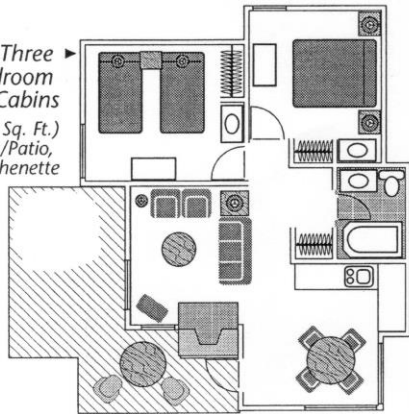
ACCOMMODATIONS

... All areas offer spectacular ocean views.

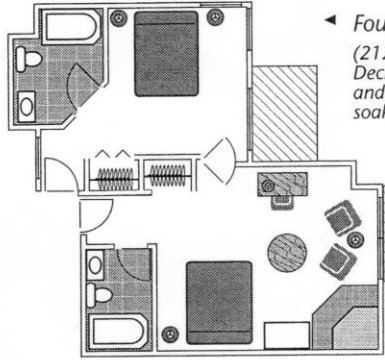
▶ **One 4-Bedroom Guest House**
(1120 Sq. Ft.)
Deck/Patio, 2 Fireplaces & Full Kitchen



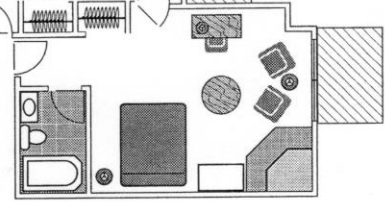
▶ **Three 2-Bedroom Cabins**
(616 Sq. Ft.)
Deck/Patio, Fireplace & Kitchenette



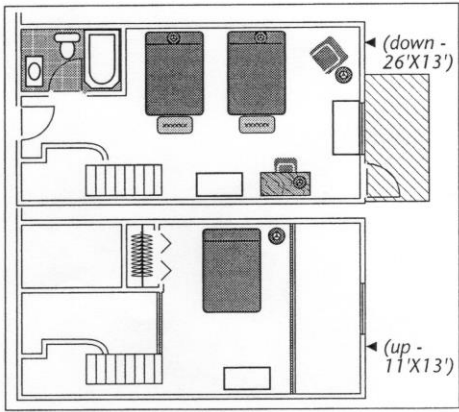
◀ **Four Suite Bedroom**
(212 Sq. Ft.)
Deck/Patio and Jacuzzi soaker tub



◀ **Four Suite Living Room**
(238 Sq. Ft.)
Gas Fireplaces Two with Deck/Patio



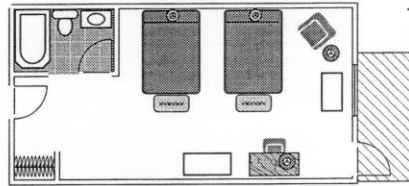
◀ (down - 26'X13')



◀ **Eight Loft Rooms**
(481 Sq. Ft.)
Deck

◀ (up - 11'X13')

◀ **Eight Double/Double Rooms**
(26'X13'
338 Sq. Ft.)



◀ **Six King Rooms**
(21'X15'
336 Sq. Ft.)

