



Tsa Kwa Luten
oceanfront resort

CONFERENCE
and
MEETING
PLANNER

Toll Free: 1-800-665-7745

Telephone: 250-830-2299

Fax: 250-285-2532

Email: helenchickite@capemudgeresort.bc.ca

Please see our web site for images of our property:

Website: www.capemudgeresort.bc.ca

Tsa-Kwa-Luten Lodge

The Oceanfront Resort at Cape Mudge

Accommodation

Total Bedrooms = 44

Total Beds = 75

Main Lodge Accommodation:

30 rooms with 4 types of rooms

- 8 lofts with 3 double beds each
- 8 doubles with 2 double beds each
- 6 rooms with 1 king bed each
- 7 rooms with 1 queen bed each
- 1 complimentary hospitality suite with queen sized sofa-bed, CD player, wet bar, small fridge (if available for dates conference is booked)

Beachfront Cottage Accommodation:

3 cottages

- One queen with two twin beds
- Living room with Gas fireplace
- Kitchenette
- Barbeque
- Patio or Deck

- All main lodge rooms have one (1) private bath
- All rooms have a balcony or patio
- All rooms & cottages have deluxe ocean views
- All main level rooms are handicap accessible, however some rooms are better suited to individuals with special needs

Tsa-Kwa-Luten Lodge

The Oceanfront Resort at Cape Mudge

PACKAGE COST

Deluxe Conference Package Prices

Spring, Fall, Winter Season Oct 1-May 31		Summer Season June 1-Sept 30	
MAIN LODGE		MAIN LODGE	
Single Occupancy	\$197.70	Single Occupancy	\$227.70
Double Occupancy	\$152.70	Double Occupancy	\$165.70
Triple Occupancy	\$138.70	Triple Occupancy	\$147.70

- Rates are quoted per person per night
- October dates subject to change depending on closing date
- Includes accommodation
- Includes breakfast, lunch, dinner and desserts- Buffet style
- Includes morning nutrition break with coffee, tea
- Includes afternoon break with coffee, tea
- Includes conference and meeting room rental with use of audio/visual equipment
- Does not include applicable taxes and some restrictions apply
- Free Wifi in the main area of lodge, rooms and cottages

Economy Conference Package Prices

Fall & Winter Season Mid October – April 30	
MAIN LODGE	
Single Occupancy	\$169.99
Double Occupancy	\$128.99
Triple Occupancy	\$117.99

- Rates are quoted per person per night
- Includes accommodation
- Includes breakfast, lunch and dinner-no desserts
- Includes morning and afternoon coffee and tea service
- Includes conference and meeting room rental with use of audio/visual equipment
- Does not include applicable taxes and some restrictions apply
- Free Wifi

Food and Beverage Facilities

- The dining room will seat up to 70 persons in a deluxe ocean view setting and comfortably service all buffet and banquet requirements
- Lounge facilities are also provided with oversized chairs where guests can relax after a busy day and enjoy the outstanding views.
- For groups of 25 or more, meals would be served Buffet style. For groups of less than 25, meals would be served by plate service.

Freshly Brewed Coffee and Teas	\$3.00 each
Coffee and Tea Refresh	\$1.50 each
Bottled Water, Soft Drinks, fruit juices (charged on consumption)	\$3.00 each
Gatorades and energy drinks (charged on consumption)	\$3.50 each
Selection of Muffins / Croissants / Squares / Cookies	\$3.25 pp
Fresh Fruit - Whole	\$2.50 pp
Fresh Fruit Salad	\$3.00 pp
Individual Yogurts and Granola bars	\$3.00 pp

BEVERAGE / NUTRITION

An ice water station will be provided with all Meetings and Conferences at no charge.

Conference and Meeting Facilities

			Full Day	Half Day
Board Room	365 Sq. ft	20 seat boardroom style	\$100.00	\$55.00
Conference Room	1225 Sq. ft	60 seat classroom style 40 seat closed square 30 seat U-shaped	\$200.00	\$120.00
Grand Hall	2500 Sq. ft.	100 seat combination style (round and rectangle)	\$500.00	\$300.00

The half day rate is available for bookings of 4 hours or less. A signboard outside each meeting room is available upon request.

- The Grand Hall area is available for use as meeting space for larger groups booking the complete main Lodge
- A variety of supplies, equipment and services are available for use by all conference guests to be used in the conference and board room
 - TV/VCR/DVD
 - Overhead Projector
 - Projector Screen
 - Flip Charts
 - White Board
 - LCD Projector
 - Microphone (if necessary)

Tsa-Kwa-Luten Lodge is able to design a package to include cultural, fishing, ecotourism or relaxation requirements. We look forward to serving you with the warmth and hospitality for which the Laichwiltach people have long been known. Should you have additional questions or would like to book space for your next conference, meeting, seminar, workshop or retreat please feel free to contact us on our toll free line at 1-800-665-7745 or at 250-285-2042 or email helenchickite@capemudgeresort.bc.ca.

Above room rental prices do not include taxes
Above beverage / nutrition prices do not include taxes or 20% Gratuity.

Tsa-Kwa-Luten Lodge

The Oceanfront Resort at Cape Mudge

Deluxe Conference Group Booking Menu

(Applicable to Groups in excess of 25)

BREAKFAST

<p>OPTION 1 WARM CONTINENTAL BUFFET Selection of fresh seasonal sliced fruit Toast with condiments and croissants Yoghurt with berry sauce & granola Hot oatmeal with brown sugar Assorted cold cereal Juices, coffee & assortment of teas</p>	<p>OPTION 2 HOT BUFFET Selection of fresh seasonal sliced fruit Toast with condiments and croissants Scrambled eggs & bacon or Eggs Benedict Hash browns Hot oatmeal with brown sugar Juices, coffee & assortment of teas</p>
---	--

LUNCH

<p>OPTION 1 FISH & CHIPS (plated) Two pieces of golden fried Pacific Ling Cod French fries House made coleslaw & tartar sauce. Coffee & assortment of teas</p>	<p>OPTION 2 CHILI & SALAD BUFFET Garden salad or Caesar salad House made chili Garlic toast Coffee & assortment of teas</p>
<p>OPTION 3 SOUP & SANDWICH BUFFET Soup of the moment Variety of sandwiches &/or pinwheel wraps Coffee & assortment of teas</p>	<p>OPTION 4 SEAFOOD CAKES (plated) 2 Panko breaded seafood cakes chili and lime aioli Garden salad or Caesar salad Coffee & assortment of teas</p>
<p>OPTION 5 CHICKEN SATAY BUFFET Succulent chicken satay Garden salad or Caesar salad Coffee & assortment of teas</p>	

DINNER

<p>OPTION 1 HAM BUFFET Chefs choice of salad Fresh baked ham Baked Ham Scalloped Potatoes Fresh seasonal vegetables Chefs choice dessert Coffee & assortment of teas</p>	<p>OPTION 2 PRIME RIB BUFFET Chefs choice salad Fresh baked bread Prime rib au jus with horseradish Yorkshire pudding Chefs choice of potatoes Fresh seasonal vegetables Chefs choice dessert Coffee & assortment of teas</p>
<p>OPTION 3 CHICKEN BUFFET Chefs choice salad Fresh baked bread Oven roasted chicken Rice pilaf Fresh seasonal vegetables Chefs choice dessert Coffee & assortment of teas</p>	<p>OPTION 4 SALMON BUFFET Chefs choice salad Fresh baked bread Grilled salmon Rice pilaf Fresh seasonal vegetables Chefs choice dessert Coffee & assortment of teas</p>

Plate service rather than Buffet will serve groups with less than 25 people
 Vegetarian options available by request, in advance (minimum 7 days notice)

Tsa-Kwa-Luten Lodge
The Oceanfront Resort at Cape Mudge

Economy Conference Group Booking Menu
(Applicable to Groups in excess of 25)

BREAKFAST

<p>OPTION 1 HOT BUFFET Scrambled eggs Bacon Hashbrowns Toast with condiments Coffee ☺ assortment of teas</p>	<p>OPTION 2 CONTINENTAL BUFFET Selection of fresh fruit Toast with condiments Yogurt with berry sauce ☺ granola Assorted cold cereal Coffee ☺ assortment of teas</p>
---	---

LUNCH

<p>OPTION 1 SOUP & SANDWICH BUFFET Soup of the moment Variety of sandwiches ☺/or pinwheel wraps Coffee ☺ assortment of teas</p>	<p>OPTION 2 CHILI & SALAD BUFFET Garden salad or Caesar salad House made chili Garlic toast Coffee ☺ assortment of teas</p>
<p>OPTION 5 CHICKEN SATAY BUFFET Succulent chicken satay Garden salad or Caesar salad Coffee ☺ assortment of teas</p>	

DINNER

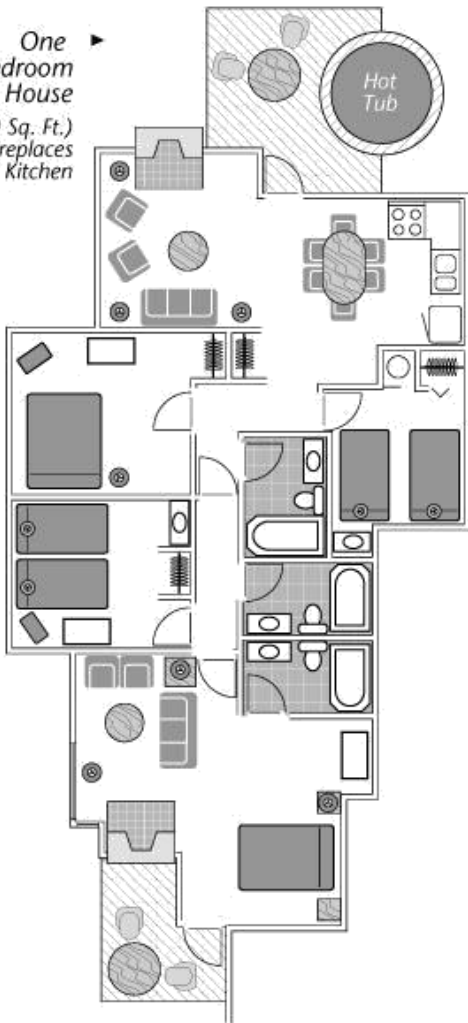
<p>OPTION 1 ROAST BEEF BUFFET Chef's choice salad Fresh baked bread Roast Beef Chef's choice potatoes Seasonal vegetables Coffee ☺ assortment of teas</p>	<p>OPTION 2 SALMON BUFFET Chef's choice salad Fresh baked bread Grilled salmon Rice pilaf Seasonal vegetables Coffee ☺ assortment of teas</p>
<p>OPTION 3 CHICKEN BUFFET Chef's choice salad Fresh baked bread Oven roasted chicken Rice pilaf Seasonal vegetables Coffee ☺ assortment of teas</p>	<p>OPTION 4 OVEN BAKED HAM Chef's choice salad Fresh baked bread Scalloped potatoes Seasonal vegetables Coffee ☺ assortment of teas</p>

*Plate service rather than Buffet will serve groups with less than 25 people
Vegetarian options available by request, in advance (minimum 7 days notice)*

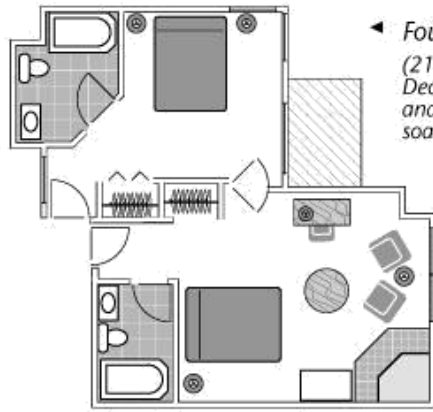
ACCOMMODATIONS

... All areas offer spectacular ocean views.

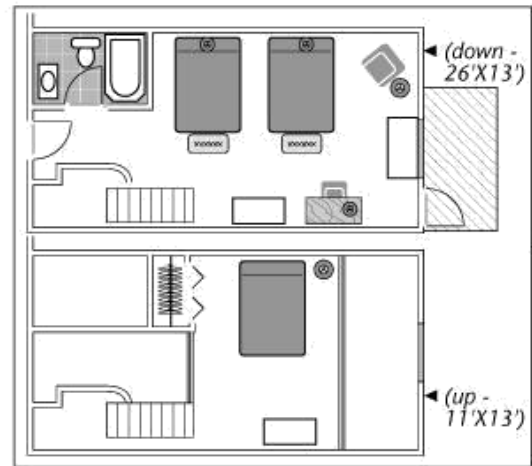
One
4-Bedroom
Guest House
(1120 Sq. Ft.)
Deck/Patio, 2 Fireplaces
& Full Kitchen



Four Suite Bedroom
(212 Sq. Ft.)
Deck/Patio
and Jacuzzi
soaker tub

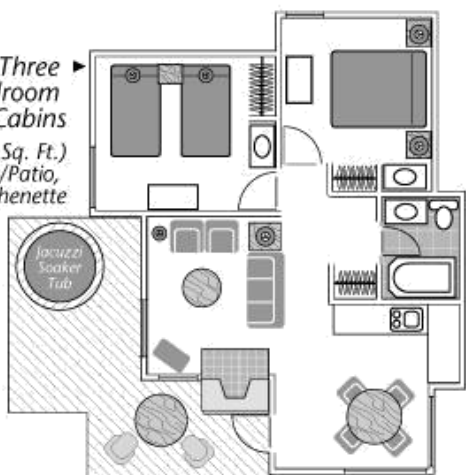


Four Suite Living Room
(238 Sq. Ft.)
Gas Fireplaces
Two with
Deck/Patio

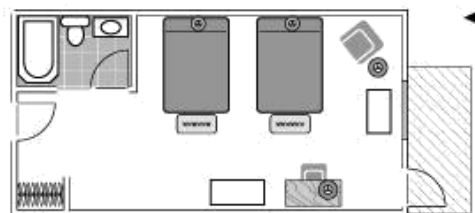


Eight
Loft
Rooms
(481
Sq. Ft.)
Deck

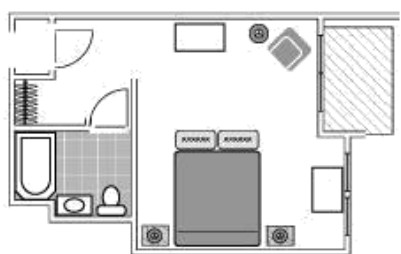
Three
2-Bedroom
Cabins
(616 Sq. Ft.)
Deck/Patio,
Fireplace & Kitchenette



Eight
Double/Double
Rooms
(26'X13'
338 Sq. Ft.)

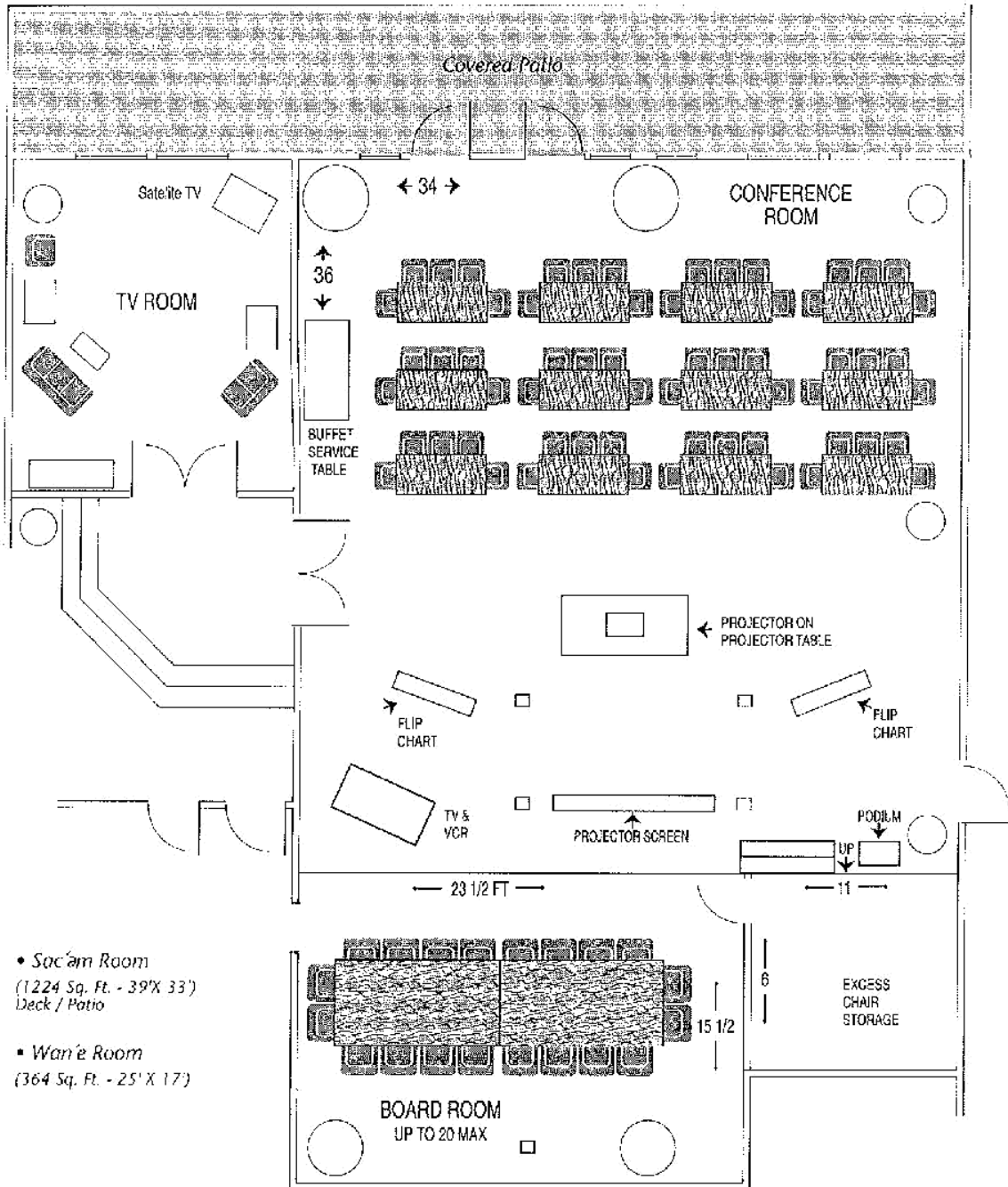


Six
King
Rooms
(21'X15'
336 Sq. Ft.)



MEETING ROOMS

... Meeting and conference facilities to 80 people



- *Sac'am Room*
(1224 Sq. Ft. - 39' X 33')
Deck / Patio

- *Wan'e Room*
(364 Sq. Ft. - 25' X 17')