



# CONFERENCE and MEETING PLANNER

Toll Free: 1-800-665-7745

Telephone: 250-285-2042

Fax: 250-285-2532

Email: [desk@capemudgeresort.bc.ca](mailto:desk@capemudgeresort.bc.ca)

Please see our web site for images of our property:

Website: [www.capemudgeresort.bc.ca](http://www.capemudgeresort.bc.ca)

# *Tsa-Kwa-Luten Lodge*

The Oceanfront Resort at Cape Mudge

## Accommodation

Total Bedrooms = 44

Total Beds = 75

### **Main Lodge Accommodation:**

30 rooms with 4 types of rooms

- 8 lofts with 3 double beds each
- 8 doubles with 2 double beds each
- 6 rooms with 1 king bed each
- 7 rooms with 1 queen bed each
- 1 complimentary hospitality suite with queen sized sofa-bed, CD player, wet bar, small fridge (if available for dates conference is booked)

### ***Beachfront Cottage Accommodation:***

6 cottages

- One queen with two twin beds
- Living room with Gas fireplace
- Kitchenette
- Barbeque
- Patio or Deck

- All rooms have one (1) private bath
- All rooms have a balcony or patio
- All rooms have deluxe ocean views
- All main level rooms are handicap accessible, however some rooms are better suited to individuals with special needs

# Tsa-Kwa-Luten Lodge

The Oceanfront Resort at Cape Mudge

## PACKAGE COST

### Deluxe Conference Package Prices

Spring & Fall Season September 9-May 14		Summer Season May 15 – September 8	
MAIN LODGE		MAIN LODGE	
Single Occupancy	\$200	Single Occupancy	\$232
Double Occupancy	\$151	Double Occupancy	\$167
Triple Occupancy	\$142	Triple Occupancy	\$152
COTTAGE		COTTAGE	
Quad Occupancy	\$145	Quad Occupancy	\$164

- Rates are quoted per person per night
- Includes accommodation
- Includes breakfast, lunch , dinner and desserts- Buffet style
- Includes morning nutrition break with coffee, tea
- Includes afternoon break with coffee, tea
- Includes conference and meeting room rental with use of audio/visual equipment
- Does not include applicable taxes and some restrictions apply
- Free Wifi in the main area of lodge, rooms and cottages

### Economy Conference Package Prices

Spring & Fall Season September 9 - May 14	
MAIN LODGE	
Single Occupancy	\$183
Double Occupancy	\$134
Triple Occupancy	\$125
COTTAGE	
Quad Occupancy	\$128

- Rates are quoted per person per night
- Includes accommodation
- Includes breakfast, lunch and dinner-no desserts
- Includes morning and afternoon coffee and tea service
- Includes conference and meeting room rental with use of audio/visual equipment
- Does not include applicable taxes and some restrictions apply
- Free Wifi in the main area of lodge-\$9.95 charge for rooms/cottages

### Food and Beverage Facilities

- The dining room will seat up to 70 persons in a deluxe ocean view setting and comfortably service all buffet and banquet requirements
- Lounge facilities are also provided with oversized chairs where guests can relax after a busy day and enjoy the outstanding views.
- For groups of 25 or more, meals would be served Buffet style. For groups of less than 25, meals would be served by plate service.

Freshly Brewed Coffee and Teas	\$3.00 each
Coffee and Tea Refresh	\$1.50 each
Bottled Water, Soft Drinks, fruit juices (charged on consumption)	\$3.00 each
Gatorades and energy drinks (charged on consumption)	\$3.50 each
Selection of Muffins / Croissants / Squares / Cookies	\$3.25 pp
Fresh Fruit - Whole	\$2.50 pp
Fresh Fruit Salad	\$3.00 pp
Individual Yogurts and Granola bars	\$3.00 pp

**BEVERAGE / NUTRITION**  
An ice water station will be provided with all Meetings and Conferences at no charge.

### Conference and Meeting Facilities

			Full Day	Half Day
<i>Board Room</i>	365 Sq. ft	20 seat boardroom style	\$100.00	\$55.00
<i>Conference Room</i>	1225 Sq. ft	60 seat classroom style 40 seat closed square 30 seat U-shaped	\$200.00	\$120.00
<i>Grand Hall</i>	2500 Sq. ft.	100 seat combination style (round and rectangle)	\$500.00	\$300.00

The half day rate is available for bookings of 4 hours or less. A signboard outside each meeting room is available upon request.

- The Grand Hall area is available for use as meeting space for larger groups booking the complete main Lodge
- A variety of supplies, equipment and services are available for use by all conference guests to be used in the conference and board room
  - TV/VCR/DVD
  - White Board
  - Overhead Projector
  - LCD Projector
  - Projector Screen
  - Microphone (if necessary)
  - Flip Charts

Tsa-Kwa-Luten Lodge is able to design a package to include cultural, fishing, ecotourism or relaxation requirements.

We look forward to serving you with the warmth and hospitality for which the Laichwiltach people have long been known. Should you have additional questions or would like to book space for your next conference, meeting, seminar, workshop or retreat please feel free to contact us on our toll free line at 1-800-665-7745 or at 250-285-2042 or email [info@capemudgeresort.bc.ca](mailto:info@capemudgeresort.bc.ca).

*Above room rental prices do not include taxes  
Above beverage / nutrition prices do not include taxes or 20% Gratuity.*

# Tsa-Kwa-Luten Lodge

The Oceanfront Resort at Cape Mudge

## Deluxe Conference Group Booking Menu

(Applicable to Groups in excess of 25)

### BREAKFAST

<p><b>OPTION #1</b> <b>WARM CONTINENTAL BUFFET</b> Selection of Fresh Seasonal Sliced Fruit Toast with condiments, muffins or croissants Yogurt with berry sauce &amp; granola Hot oatmeal with brown sugar Assorted cold cereal Juices, coffees &amp; assortment of teas</p>	<p><b>OPTION #2</b> <b>HOT BUFFET</b> Selection of Fresh Seasonal Sliced Fruit Toast with condiments &amp; selection of muffins Scrambled Eggs &amp; Bacon OR Eggs Benedict Hash browns Hot oatmeal with brown sugar Juices, coffee &amp; assortment of teas</p>
---	--

### LUNCH

<p><b>OPTION #1</b> <b>SOUP AND SANDWICH BUFFET</b> Soup of the Moment Build your own Sandwich buffet Fresh Garden Salad with assorted dressings Coffee &amp; assortment of teas</p>	<p><b>OPTION #2</b> <b>HOT LUNCH BUFFET</b> Garden Salad or Caesar Salad In House Baked Lasagna Garlic Toast Coffee &amp; assortment of teas</p> <p><b>OPTION #3</b> Seafood Pockets Garden Salad or Caesar Salad Coffee &amp; assortment of teas</p>
--	---

### DINNER

<p><b>OPTION #1</b> <b>HAM BUFFET</b> Chefs Choice Salad Fresh baked bread Baked Ham Scalloped Potatoes Fresh seasonal Vegetables Chefs choice dessert Coffee and Tea</p> <p><b>OPTION #3</b> <b>CHICKEN BUFFET</b> Chefs Choice Salad Fresh baked bread Oven Roasted Chicken Rice pilaf Fresh seasonal Vegetables Chefs choice dessert Coffee and Tea</p>	<p><b>OPTION #2</b> <b>PRIME RIB BUFFET</b> Chefs Choice Salad Fresh baked bread Prime Rib au jus with Horseradish Yorkshire Pudding Roasted Baby Potatoes Fresh seasonal Vegetables Chefs choice dessert Coffee and Tea</p> <p><b>OPTION #4</b> <b>SALMON BUFFET</b> Chefs Choice Salad Fresh baked bread Barbecued Salmon Sides Rice pilaf Fresh seasonal Vegetables Chefs choice dessert Coffee and Tea</p>
--	--

Plate service rather than Buffet will serve groups with less than 25 people.

# *Tsa-Kwa-Luten Lodge*

The Oceanfront Resort at Cape Mudge

## Economy Conference Group Booking Menu

(Applicable to Groups in excess of 25)

### BREAKFAST

<b>OPTION #1 HOT BUFFET</b> Scrambled Eggs Bacon Hash Browns Toast with condiments Hot oatmeal with brown sugar Juices, Coffee & Assortment of Teas	<b>OPTION #2 CONTINENTAL BUFFET</b> Selection of Fresh Fruit Toast w Condiments, Muffins Yogurt with berry sauce & granola Assorted Cold Cereal Hot oatmeal with brown sugar Juices, Coffee & Assortment of Teas
---	--

### LUNCH

<b>OPTION #1</b> <b>SOUP AND SANDWICH BUFFET</b> Soup of the Moment Build your own sandwich buffet Coffee and Assortment of Teas	<b>OPTION #2</b> <b>CHILI AND TOAST</b> Home made Chili with Garlic Toast Garden Salad or Caesar Salad Coffee and Assortment of Teas
--	--

### DINNER

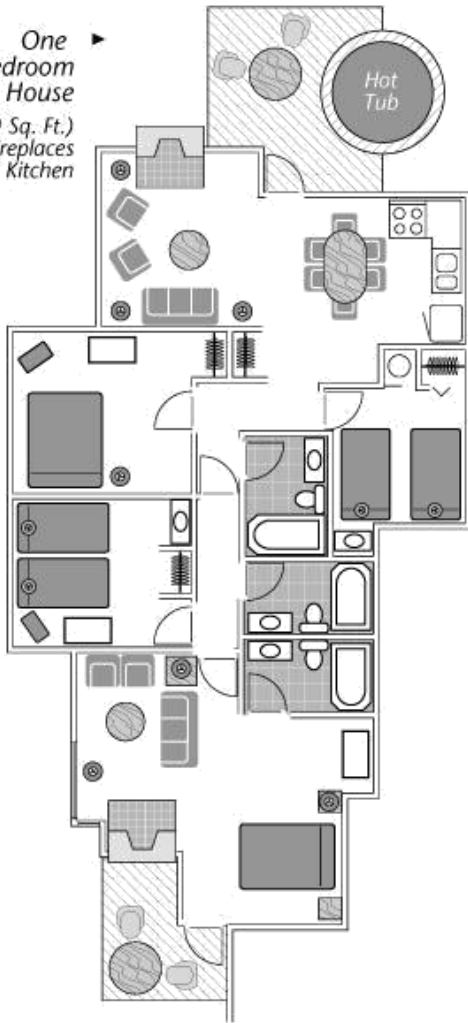
<b>OPTION #1</b> <b>ROAST BEEF BUFFET</b> Chef's Choice Salad Fresh baked bread Grade A Roast Beef Roasted Potatoes Seasonal Vegetables Coffee and Assortment of Teas	<b>OPTION #2</b> <b>SALMON BUFFET</b> Chef's Choice Salad Fresh baked bread Grilled Salmon w) creamy dill sauce Rice Pilaf Seasonal Vegetables Coffee and Assortment of Teas
<b>OPTION #3</b> <b>CHICKEN BUFFET</b> Chef's Choice Salad Fresh baked bread Oven Roasted Chicken  Rice Pilaf Seasonal Vegetables Coffee and Assortment of Teas	<b>OPTION #4</b> <b>OVEN BAKED HAM</b> Chef's Choice Salad Fresh baked bread Scalloped Potatoes  Seasonal Vegetables Coffee and Assortment of Teas

Plate service rather than Buffet will serve groups with less than 25 people.

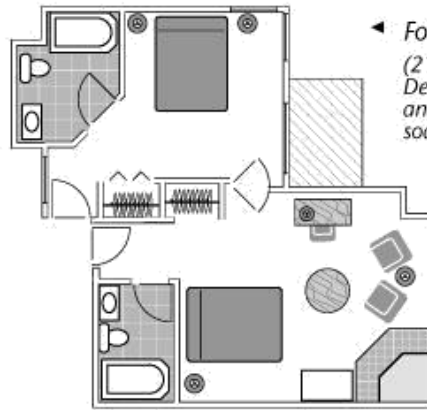
# ACCOMMODATIONS

... All areas offer spectacular ocean views.

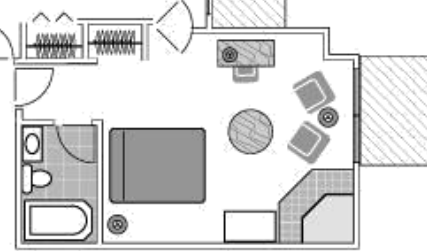
One  
4-Bedroom  
Guest House  
(1120 Sq. Ft.)  
Deck/Patio, 2 Fireplaces  
& Full Kitchen



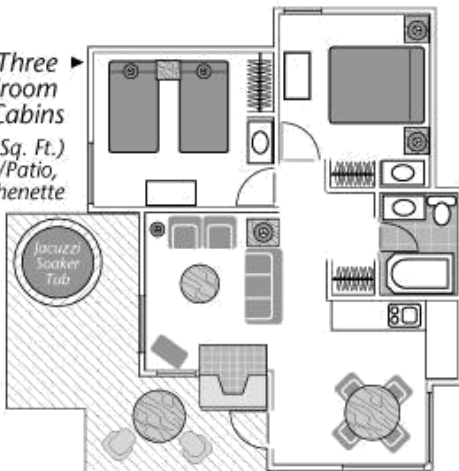
Four Suite Bedroom  
(212 Sq. Ft.)  
Deck/Patio  
and Jacuzzi  
soaker tub



Four Suite  
Living Room  
(238 Sq. Ft.)  
Gas Fireplaces  
Two with  
Deck/Patio

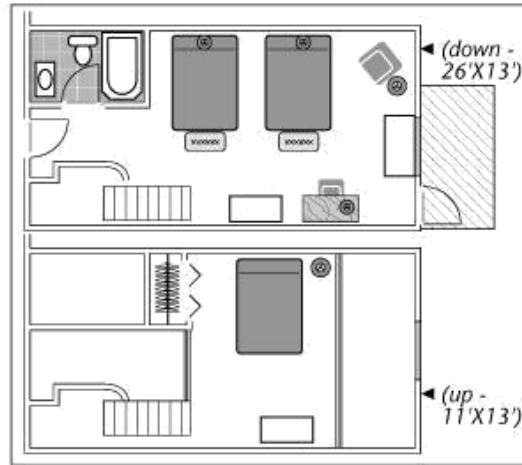


Three  
2-Bedroom  
Cabins  
(616 Sq. Ft.)  
Deck/Patio,  
Fireplace & Kitchenette



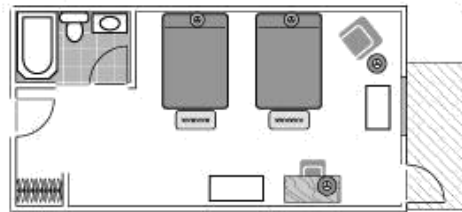
(down -  
26'X13')

Eight  
Loft  
Rooms  
(481  
Sq. Ft.)  
Deck

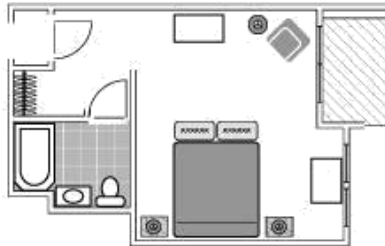


(up -  
11'X13')

Eight  
Double/Double  
Rooms  
(26'X13'  
338 Sq. Ft.)

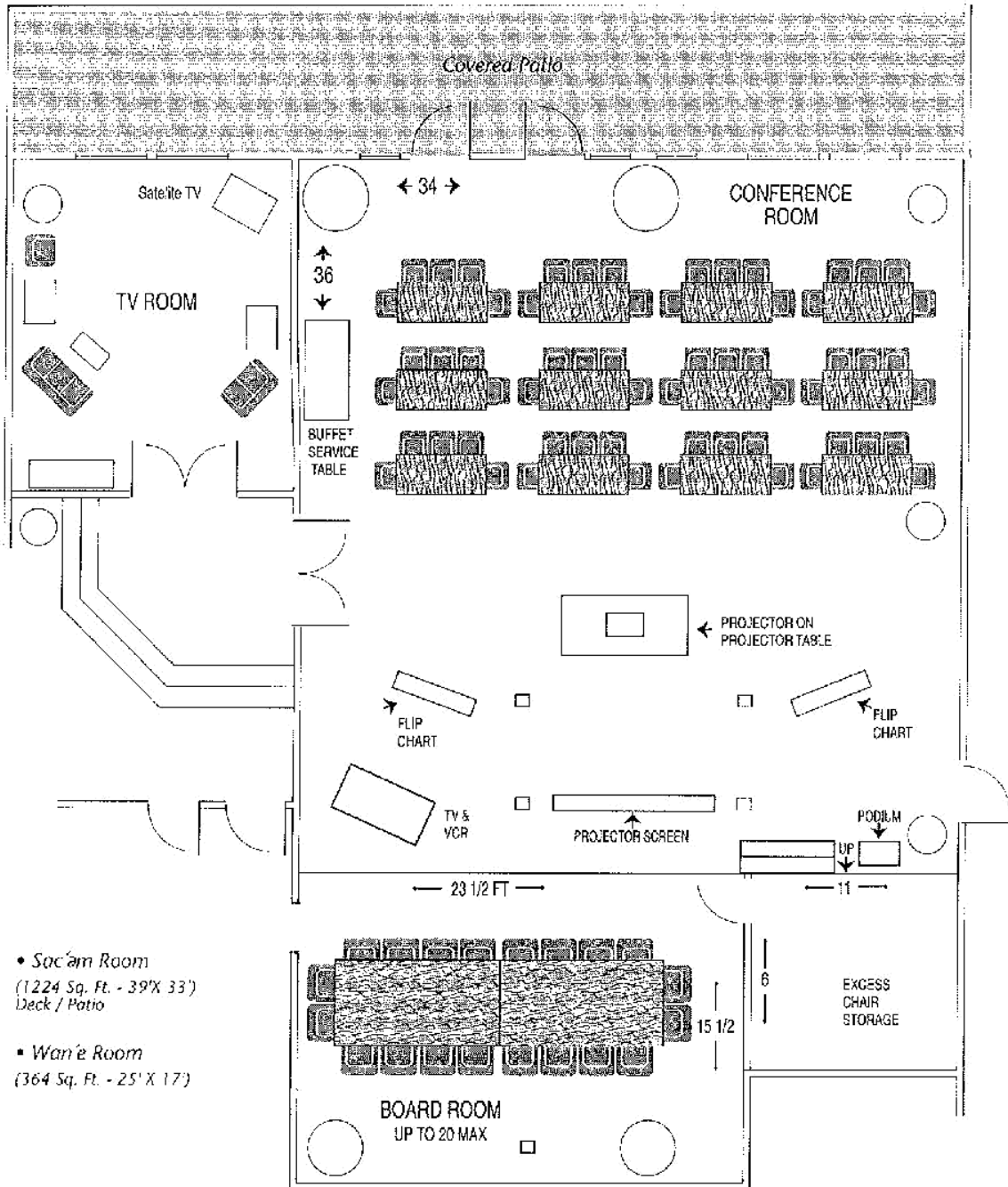


Six  
King  
Rooms  
(21'X15'  
336 Sq. Ft.)



# MEETING ROOMS

... Meeting and conference facilities to 80 people



• *Sac'am Room*  
(1224 Sq. Ft. - 39' X 33')  
Deck / Patio

• *Wan'e Room*  
(364 Sq. Ft. - 25' X 17')