



Tsa Kwa Luten  
oceanfront resort

CONFERENCE  
and  
MEETING  
PLANNER

Toll Free: 1-800-665-7745

Telephone: 250-285-2042

Fax: 250-285-2532

Email: [helenchickite@capemudgeresort.bc.ca](mailto:helenchickite@capemudgeresort.bc.ca)

Please see our web site for images of our property:

Website: [www.capemudgeresort.bc.ca](http://www.capemudgeresort.bc.ca)

# *Tsa-Kwa-Luten Lodge*

The Oceanfront Resort at Cape Mudge

## Accommodation

Total Bedrooms = 44  
Total Beds = 75

### **Main Lodge Accommodation:**

30 rooms with 4 types of rooms

- 8 lofts with 3 double beds each
- 8 doubles with 2 double beds each
- 6 rooms with 1 king bed each
- 7 rooms with 1 queen bed each
- 1 complimentary hospitality suite with queen sized sofa-bed, CD player, wet bar, small fridge (if available for dates conference is booked)

### **Beachfront Cottage Accommodation:**

3 cottages

- One queen with two twin beds
- Living room with Gas fireplace
- Kitchenette
- Barbeque
- Patio or Deck

- All main lodge rooms have one (1) private bath
- All rooms have a balcony or patio
- All rooms & cottages have deluxe ocean views
- All main level rooms are handicap accessible, however some rooms are better suited to individuals with special needs

# Tsa-Kwa-Luten Lodge

The Oceanfront Resort at Cape Mudge

## PACKAGE COST

### Deluxe Conference Package Prices

Spring, Fall, Winter Season Sept 9-June 14		Summer Season June 15 – Sept 8	
MAIN LODGE		MAIN LODGE	
Single Occupancy	\$197.70	Single Occupancy	\$227.70
Double Occupancy	\$152.70	Double Occupancy	\$165.70
Triple Occupancy	\$138.70	Triple Occupancy	\$147.70

- Rates are quoted per person per night
- October dates subject to change depending on closing date
- Includes accommodation
- Includes breakfast, lunch, dinner and desserts- Buffet style
- Includes morning nutrition break with coffee, tea
- Includes afternoon break with coffee, tea
- Includes conference and meeting room rental with use of audio/visual equipment
- Does not include applicable taxes and some restrictions apply
- Free Wifi in the main area of lodge, rooms and cottages

### Economy Conference Package Prices

Fall & Winter Season Mid October – April 30	
MAIN LODGE	
Single Occupancy	\$169.99
Double Occupancy	\$128.99
Triple Occupancy	\$117.99

- Rates are quoted per person per night
- Includes accommodation
- Includes breakfast, lunch and dinner-no desserts
- Includes morning and afternoon coffee and tea service
- Includes conference and meeting room rental with use of audio/visual equipment
- Does not include applicable taxes and some restrictions apply
- Free Wifi

## Food and Beverage Facilities

- The dining room will seat up to 70 persons in a deluxe ocean view setting and comfortably service all buffet and banquet requirements
- Lounge facilities are also provided with oversized chairs where guests can relax after a busy day and enjoy the outstanding views.
- For groups of 25 or more, meals would be served Buffet style. For groups of less than 25, meals would be served by plate service.

Freshly Brewed Coffee and Teas	\$3.00 each
Coffee and Tea Refresh	\$1.50 each
Bottled Water, Soft Drinks, fruit juices (charged on consumption)	\$3.00 each
Gatorades and energy drinks (charged on consumption)	\$3.50 each
Selection of Muffins / Croissants / Squares / Cookies	\$3.25 pp
Fresh Fruit - Whole	\$2.50 pp
Fresh Fruit Salad	\$3.00 pp
Individual Yogurts and Granola bars	\$3.00 pp

### BEVERAGE / NUTRITION

An ice water station will be provided with all Meetings and Conferences at no charge.

## Conference and Meeting Facilities

			Full Day	Half Day
<b>Board Room</b>	365 Sq. ft	20 seat boardroom style	\$100.00	\$55.00
<b>Conference Room</b>	1225 Sq. ft	60 seat classroom style 40 seat closed square 30 seat U-shaped	\$200.00	\$120.00
<b>Grand Hall</b>	2500 Sq. ft.	100 seat combination style (round and rectangle)	\$500.00	\$300.00

The half day rate is available for bookings of 4 hours or less. A signboard outside each meeting room is available upon request.

- The Grand Hall area is available for use as meeting space for larger groups booking the complete main Lodge
- A variety of supplies, equipment and services are available for use by all conference guests to be used in the conference and board room
  - TV/VCR/DVD
  - Overhead Projector
  - Projector Screen
  - Flip Charts
  - White Board
  - LCD Projector
  - Microphone (if necessary)

Tsa-Kwa-Luten Lodge is able to design a package to include cultural, fishing, ecotourism or relaxation requirements. We look forward to serving you with the warmth and hospitality for which the Laichwiltach people have long been known. Should you have additional questions or would like to book space for your next conference, meeting, seminar, workshop or retreat please feel free to contact us on our toll free line at 1-800-665-7745 or at 250-285-2042 or email [helenchickite@capemudgeresort.bc.ca](mailto:helenchickite@capemudgeresort.bc.ca).

Above room rental prices do not include taxes  
Above beverage / nutrition prices do not include taxes or 20% Gratuity.

# *Tsa-Kwa-Luten Lodge*

*The Oceanfront Resort at Cape Mudge*

## Deluxe Conference Group Booking Menu

*(Applicable to Groups in excess of 25)*

### BREAKFAST

<p><b>OPTION 1 WARM CONTINENTAL BUFFET</b>  <i>Selection of fresh seasonal sliced fruit                  Toast with condiments and croissants                  Yoghurt with berry sauce &amp; granola                  Hot oatmeal with brown sugar                  Assorted cold cereal                  Juices, coffee &amp; assortment of teas</i></p>	<p><b>OPTION 2 HOT BUFFET</b>  <i>Selection of fresh seasonal sliced fruit                  Toast with condiments and croissants                  Scrambled eggs &amp; bacon or Eggs Benedict                  Hash browns                  Hot oatmeal with brown sugar                  Juices, coffee &amp; assortment of teas</i></p>
--	---

### LUNCH

<p><b>OPTION 1 FISH &amp; CHIPS (plated)</b>  <i>Two pieces of golden fried Pacific Ling Cod                  French fries                  House made coleslaw &amp; tartar sauce.                  Coffee &amp; assortment of teas</i></p>	<p><b>OPTION 2 CHILI &amp; SALAD BUFFET</b>  <i>Garden salad or Caesar salad                  House made chili                  Garlic toast                  Coffee &amp; assortment of teas</i></p>
<p><b>OPTION 3 SOUP &amp; SANDWICH BUFFET</b>  <i>Soup of the moment                  Variety of sandwiches &amp;/or pinwheel wraps                  Coffee &amp; assortment of teas</i></p>	<p><b>OPTION 4 SEAFOOD CAKES (plated)</b>  <i>2 Panko breaded seafood cakes                  chili and lime aioli                  Garden salad or Caesar salad                  Coffee &amp; assortment of teas</i></p>
<p><b>OPTION 5 CHICKEN SATAY BUFFET</b>  <i>Succulent chicken satay                  Garden salad or Caesar salad                  Coffee &amp; assortment of teas</i></p>	

### DINNER

<p><b>OPTION 1 HAM BUFFET</b>  <i>Chefs choice of salad                  Fresh baked ham                  Baked Ham                  Scalloped Potatoes                  Fresh seasonal vegetables                  Chefs choice dessert                  Coffee &amp; assortment of teas</i></p>	<p><b>OPTION 2 PRIME RIB BUFFET</b>  <i>Chefs choice salad                  Fresh baked bread                  Prime rib au jus with horseradish                  Yorkshire pudding                  Chefs choice of potatoes                  Fresh seasonal vegetables                  Chefs choice dessert                  Coffee &amp; assortment of teas</i></p>
<p><b>OPTION 3 CHICKEN BUFFET</b>  <i>Chefs choice salad                  Fresh baked bread                  Oven roasted chicken                  Rice pilaf                  Fresh seasonal vegetables                  Chefs choice dessert                  Coffee &amp; assortment of teas</i></p>	<p><b>OPTION 4 SALMON BUFFET</b>  <i>Chefs choice salad                  Fresh baked bread                  Grilled salmon                  Rice pilaf                  Fresh seasonal vegetables                  Chefs choice dessert                  Coffee &amp; assortment of teas</i></p>

*Plate service rather than Buffet will serve groups with less than 25 people  
 Vegetarian options available by request, in advance (minimum 7 days notice)*

# *Tsa-Kwa-Luten Lodge*

The Oceanfront Resort at Cape Mudge

## Economy Conference Group Booking Menu

(Applicable to Groups in excess of 25)

### BREAKFAST

<p><b>OPTION 1</b> <b>HOT BUFFET</b> Scrambled eggs Bacon Hashbrowns Toast with condiments Coffee ☺ assortment of teas</p>	<p><b>OPTION 2</b> <b>CONTINENTAL BUFFET</b> Selection of fresh fruit Toast with condiments Yogurt with berry sauce ☺ granola Assorted cold certal Coffee ☺ assortment of teas</p>
--	--

### LUNCH

<p><b>OPTION 1</b> <b>SOUP &amp; SANDWICH BUFFET</b> Soup of the moment Variety of sandwiches ☺/or pinwheel wraps Coffee ☺ assortment of teas</p>	<p><b>OPTION 2</b> <b>CHILI &amp; SALAD BUFFET</b> Garden salad or Caesar salad House made chili Garlic toast Coffee ☺ assortment of teas</p>
<p><b>OPTION 3</b> <b>SOUP &amp; SANDWICH BUFFET</b> Soup of the moment Variety of sandwiches ☺/or pinwheel wraps Coffee ☺ assortment of teas</p>	<p><b>OPTION 4</b> <b>SEAFOOD CAKES (plated)</b> 2 Panko breaded seafood cakes chili and lime aioli Garden salad or Caesar salad Coffee ☺ assortment of teas</p>
<p><b>OPTION 5</b> <b>CHICKEN SATAY BUFFET</b> Succulent chicken satay Garden salad or Caesar salad Coffee ☺ assortment of teas</p>	

### DINNER

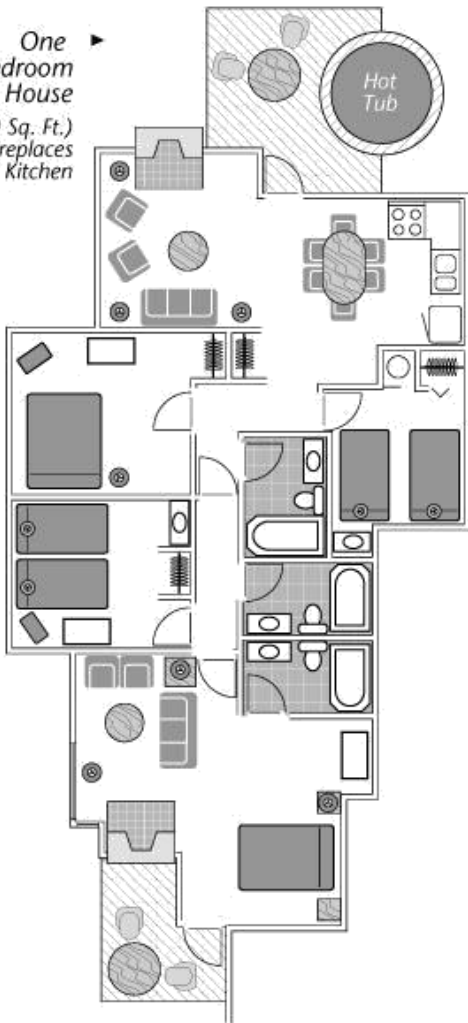
<p><b>OPTION 1</b> <b>ROAST BEEF BUFFET</b> Chef's choice salad Fresh baked bread Roast Beef Chef's choice potatoes Seasonal vegetables Coffee ☺ assortment of teas</p>	<p><b>OPTION 2</b> <b>SALMON BUFFET</b> Chef's choice salad Fresh baked bread Grilled salmon Rice pilaf Seasonal vegetables Coffee ☺ assortment of teas</p>
<p><b>OPTION 3</b> <b>CHICKEN BUFFET</b> Chef's choice salad Fresh baked bread Oven roasted chicken Rice pilaf Seasonal vegetables Coffee ☺ assortment of teas</p>	<p><b>OPTION 4</b> <b>OVEN BAKED HAM</b> Chef's choice salad Frsh baked bread Scalloped potatoes Seasonal vegetables Coffee ☺ assortment of teas</p>

*Plate service rather than Buffet will serve groups with less than 25 people  
Vegetarian options available by request, in advance (minimum 7 days notice)*

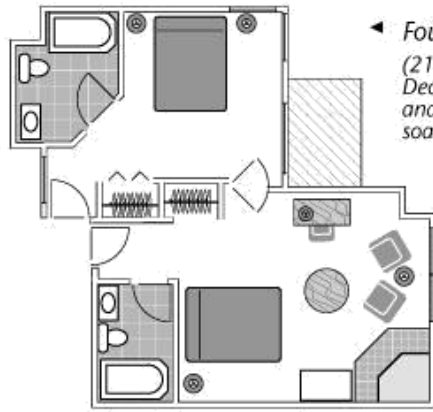
# ACCOMMODATIONS

... All areas offer spectacular ocean views.

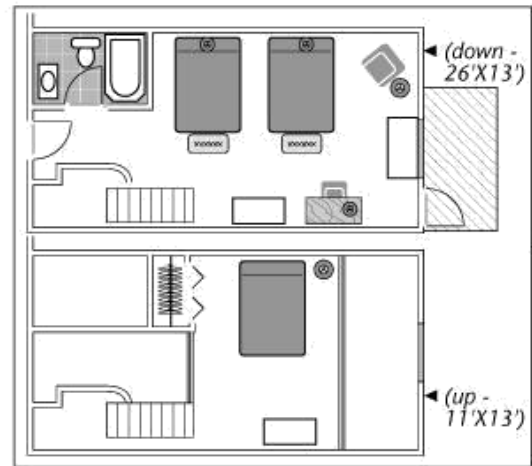
One  
4-Bedroom  
Guest House  
(1120 Sq. Ft.)  
Deck/Patio, 2 Fireplaces  
& Full Kitchen



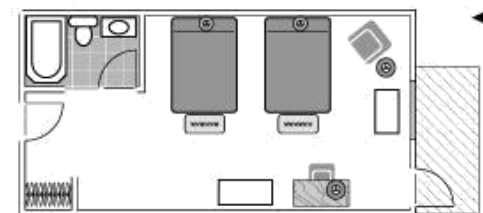
Four Suite Bedroom  
(212 Sq. Ft.)  
Deck/Patio and Jacuzzi  
soaker tub



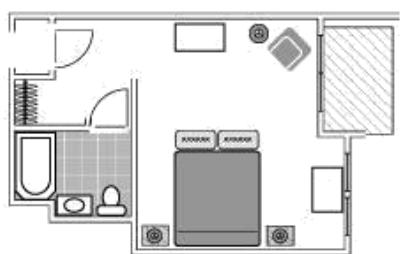
Four Suite Living Room  
(238 Sq. Ft.)  
Gas Fireplaces  
Two with  
Deck/Patio



Eight  
Loft  
Rooms  
(481  
Sq. Ft.)  
Deck

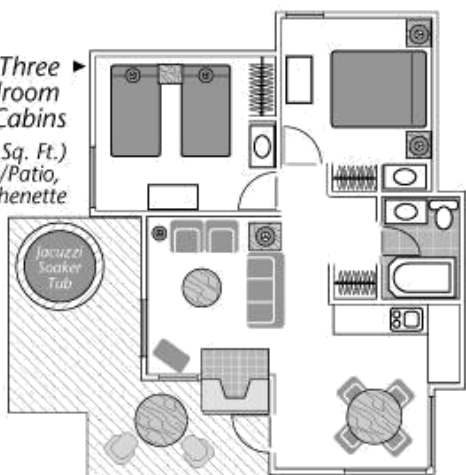


Eight  
Double/Double  
Rooms  
(26'X13'  
338 Sq. Ft.)



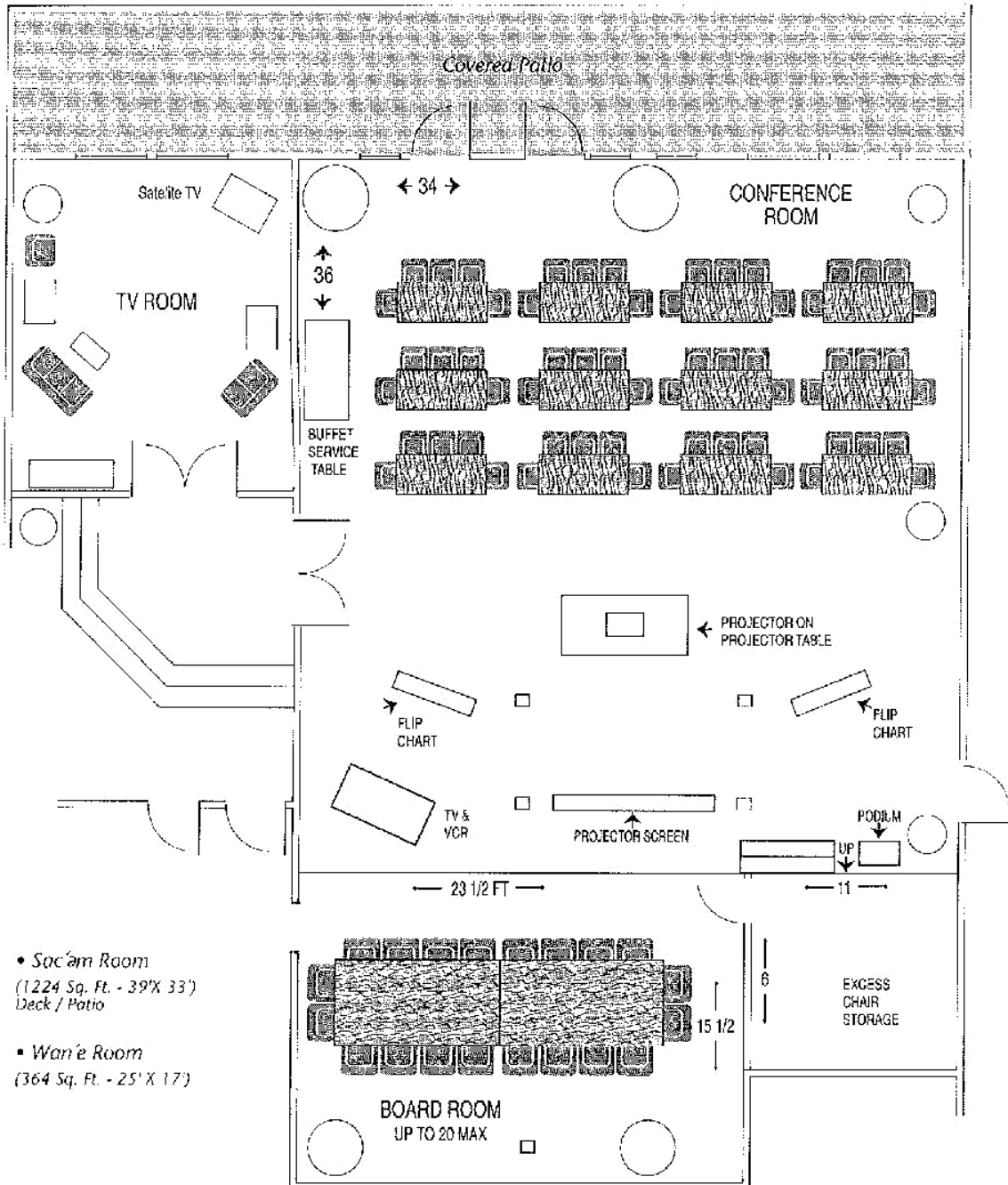
Six  
King  
Rooms  
(21'X15'  
336 Sq. Ft.)

Three  
2-Bedroom  
Cabins  
(616 Sq. Ft.)  
Deck/Patio,  
Fireplace & Kitchenette



# MEETING ROOMS

... Meeting and conference facilities to 80 people



- *Sac'am Room*  
(1224 Sq. Ft. - 39' X 33')  
Deck / Patio

- *Wan'e Room*  
(364 Sq. Ft. - 25' X 17')